

# PRODUCT INFORMATION PACKET



Model No: SQ1102  
Catalog No: SQ1102

Pool Pump Motor, 1 HP, 1 Ph, 60 Hz, 230/115 V, 3600 RPM, 48Y Frame, ODP



Regal and Century are trademarks of Regal Rexnord Corporation or one of its affiliated companies.  
©2023 Regal Rexnord Corporation, All Rights Reserved. MC017097E





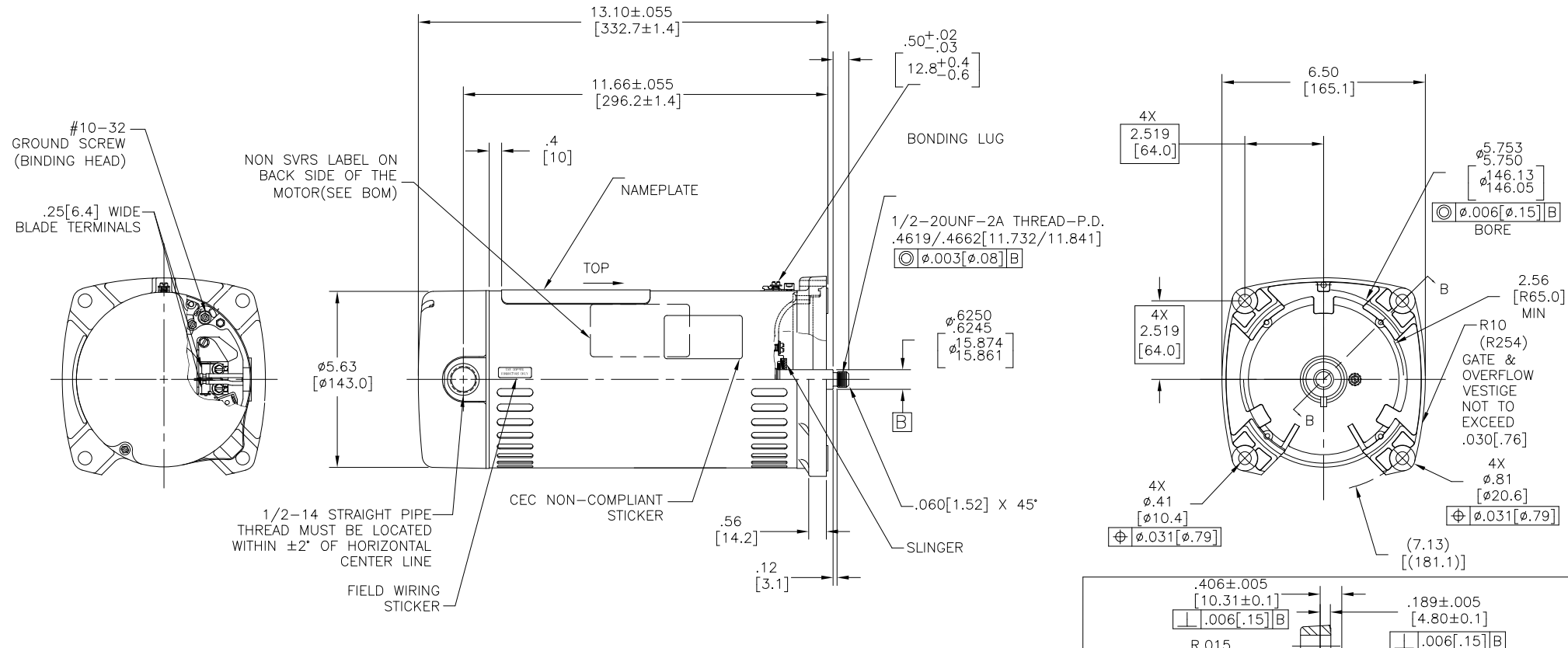
**Nameplate Specifications**

Phase	1	Output HP	1 Hp
Output KW	0.75 kW	Voltage	230/115 V
Speed	3450 rpm	Service Factor	1.65
Frame	48Y	Enclosure	Open Drip Proof
Thermal Protection	Automatic	Efficiency	55.2 %
Ambient Temperature	50 °C	Frequency	60 Hz
Current	9.0/18.0 A	Duty	Continuous
Insulation Class	B	UL	Recognized
CSA	Y	Number of Speeds	1

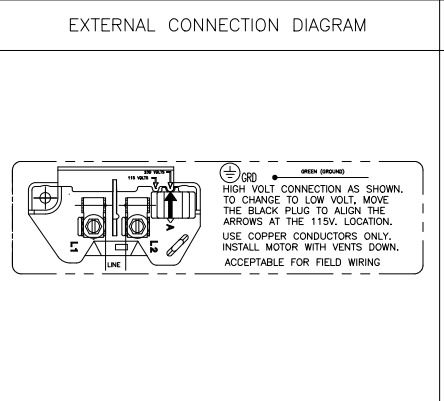
**Technical Specifications**

Electrical Type	Cap Start Motor	Starting Method	Across The Line
Poles	2	Rotation	Counterclockwise Pump End
Mounting	Round	Motor Orientation	Horizontal
Drive End Bearing	Ball	Opp Drive End Bearing	Ball
Frame Material	Rolled Steel	Shaft Type	1/2 Thread
Overall Length	13.82 in	Frame Length	9.94 in
Shaft Diameter	0.625 in	Shaft Extension	0.906 in
Connection Drawing	627103-006	Outline Drawing	SQ1102

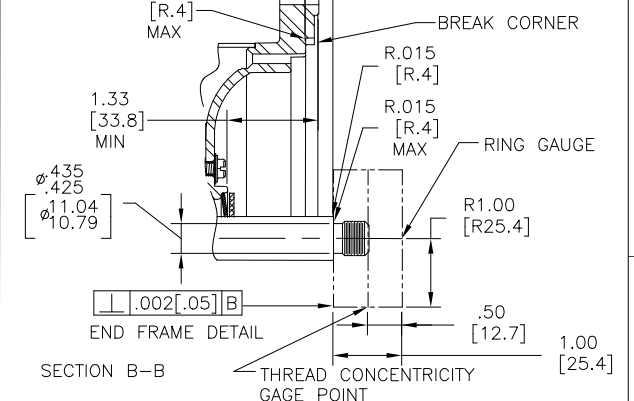
This is an uncontrolled document once printed or downloaded and is subject to change without notice. Date Created:05/27/2023



NAMEPLATE DATA	
MODEL: C48L2PA105C4	CUST PN: SQ1102
HP: 1.0	SF: 1.65
ROT: CCWPE	RPM: 3450
TYPE: UAC	FORM: CODE: M
	FRAME: 48Y
VOLTS: 230/115	
AMPS:	
MAX AMPS: 9.6/19.2	
SF AMPS: 18.0/9.0	
PH: 1	HZ: 60
INS: B	AMB: 50C
DUTY: CONT	
ENCLOSURE: ODP	
THERMALLY-PROTECTED	



- NOTES
1. FINISH PAINT TO BE SATIN BLACK.
  2. .44 [11.2] WRENCH FLATS ON SHAFT-FOR ACCESS TO THIS WRENCH FLAT REMOVE END COVER.
  3. STAINLESS STEEL SHAFT EXT.
  4. LIMITS ON AMPLITUDE OF VIBRATION MEASURED AT BEARING HOUSING = .001 [.02]
  5. CONNECTED FOR 230 VOLTS. QUICK VOLTAGE CHANGE DIAL INCLUDED ON THE TERMINAL BOARD.
  6. SUPPORT PAD TO BE PACKED WITH EACH MOTOR
  7. CTQ REQUIREMENT SEE EPO00105-008.
  8. RoHS & REACH ETC REQUIREMENT SEE EPO00014.

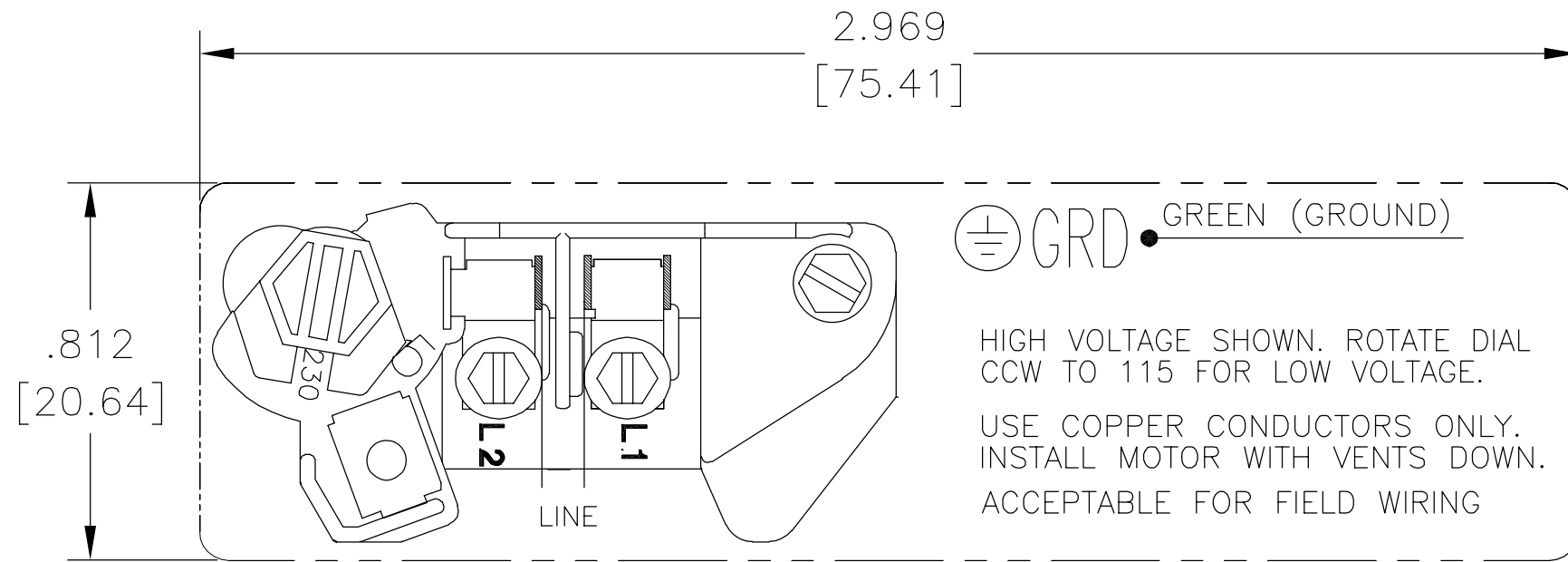


PERFORMANCE CURVE	APPROVED SAMPLE		
C48L2W27			
UL COMPONENT	CSA		
FILE#	CCN#	FILE#	GUIDE#
E46412	PRGY2	LR43341	4211-01
CUSTOMER	DISTRIBUTION SERVICES		

CRITICAL TO QUALITY CHARACTERISTICS (CTQs)	DRAWING REVISION	REVISION BY	DATE	TOLERANCES UNLESS OTHERWISE SPECIFIED	DRAWN BY:
Ⓟ PROCESS	ECO	JUDY ZHU	05-18-2023	DEC. INCH [±.3] ANGLE ±0.5°	JLJC
Ⓛ ENGINEERING	ECR-0225766	TRISIA ZHAO	05-18-2023	.XX ±0.1 [±.3]	DATE: 05-12-09
Ⓜ APPLICATION	ADD "SEE BOM" FOR NON SVRS LABEL NOTE				APPROVED BY:
Ⓡ REGULATORY	COPYRIGHT REGAL BELTOI AMERICA, INC. ALL RIGHTS RESERVED. PROPRIETARY AND CONFIDENTIAL INFORMATION - THIS DOCUMENT IS THE PROPERTY OF REGAL BELTOI AMERICA, INC. (OWNER) AND COMPANY OWNER'S PROPRIETARY INFORMATION. ANY REPRODUCTION OR OTHER USE WITHOUT THE WRITTEN PERMISSION OF REGAL BELTOI AMERICA, INC. IS STRICTLY PROHIBITED. BY RECEIVING IT, TO AGREE THAT IT, AND/OR ANY PART OF IT, SHALL NOT BE DISCLOSED TO ANY PERSON, CORPORATION OR OTHER ENTITY, DUPLICATED, AND/OR USED, EXCEPT AS EXPRESSLY APPROVED IN WRITING IN ADVANCE BY OWNER. THIS DOCUMENT SHALL BE RETURNED TO OWNER UPON REQUEST. IT MAY BE SUBJECT TO CERTAIN RESTRICTIONS UNDER APPLICABLE EXPORT CONTROL LAWS AND REGULATIONS.				DATE:
Ⓢ LIFE					REFERENCE

DESCRIPTION	MATERIAL	PROCESS/FINISH	SIZE	DWG NO	SHEET
MODEL-PFHP-48FR OUTLINE			C	SQ1102	1

REV	ECO	REV BY	DATE	APPD	DATE
B	0001487	D.MUÑOZ	04-13-2009	M.ARGUELLES	04-13-2009



DUAL VOLTAGE

NOTE:

1. FOR USE WITH 616231 NAME PLATE BLANK.
2. — — — — INDICATES DIMENSIONAL LIMITS.
3. DIE MUST PRODUCE A LEGIBLE IMPRESSION.

GEOMETRIC CHARACTERISTICS & SYMBOLS

- ▭ FLATNESS
- STRAIGHTNESS
- ∠ ANGULARITY
- ⊥ PERPENDICULARITY (SQUARENESS)
- // PARALLELISM
- ROUNDNESS (CIRCULARITY)
- ⊘ CYLINDRICITY
- △ PROFILE OF ANY SURFACE
- ⌒ PROFILE OF ANY LINE
- ↑ RUNOUT
- ⊕ TRUE POSITION
- ◎ CONCENTRICITY
- ⊖ SYMMETRY

UNLESS OTHERWISE SPECIFIED  
DIM. TOLERANCES ARE AS FOLLOWS:

INCH	±.1	±.02	±.005	±.0005
mm	±0.5	±0.13	±0.013	

ANG. ±.50 DEG

REMOVE BURRS & BREAK SHARP EDGES:

INCH	.003-.015	mm	0.1-0.4
------	-----------	----	---------

CORNER FILLETS TO:

INCH	.020	mm	0.5
------	------	----	-----

MACHINE SURFACES:

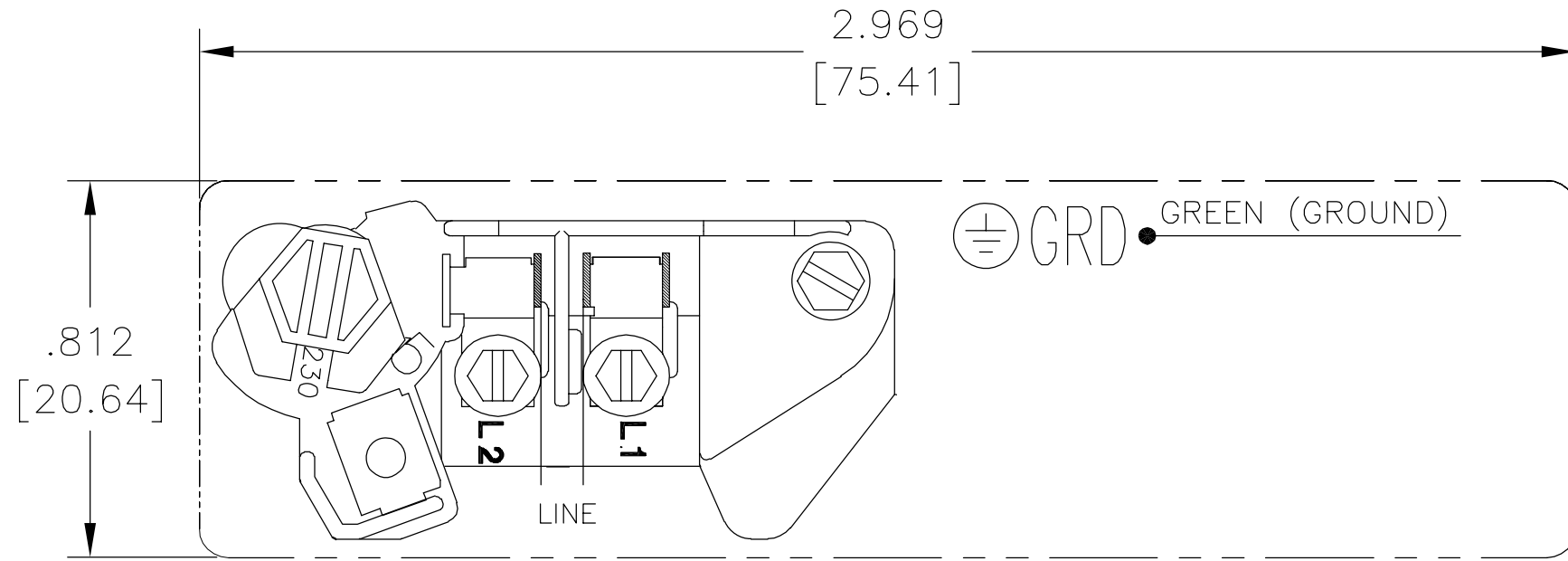
INCH	125	mm	3.2
------	-----	----	-----

METRIC DIMS. SHOWN IN [BRACKETS]

DR BY:	Daniel Muñoz	04-13-2009
APPD:		
THIRD ANGLE PROJECTION		EDS DATE 02-22-2009 FORMAT REV F
CONFIDENTIAL: THIS DRAWING AND ITS INFORMATION ARE THE EXCLUSIVE AND CONFIDENTIAL PROPERTY OF A.O. SMITH CORP. AND ARE NOT TO BE DISCLOSED, DUPLICATED, DISTRIBUTED OR OTHERWISE USED WITHOUT THE WRITTEN CONSENT OF A.O. SMITH CORP. -ALL RIGHTS RESERVED. ASME Y14.5M 1994		

 innovation has a name.		<b>ELECTRICAL PRODUCTS COMPANY</b> <small>A DIVISION OF A. O. SMITH CORPORATION</small>	
DESCRIPTION <b>CONNECTION DIAGRAM EXTERNAL</b>			
SIZE A	DWG NO 627103-006		
SCALE NONE			SHEET 1

REVISION:	ECO	REVISADO POR:	FECHA:	APROBADO POR:	FECHA:
B	0001487	D.MUÑOZ	04-13-2009	M.ARGUELLES	04-13-2009



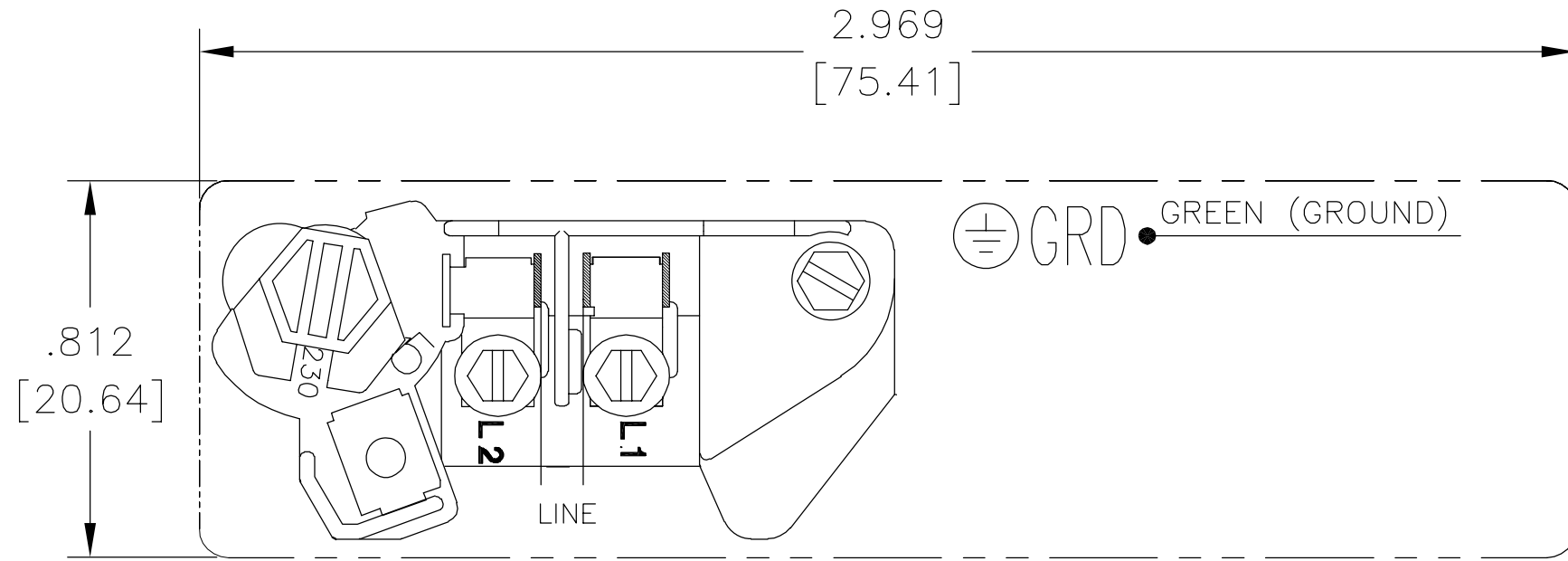
VOLTAJE DOBLE

NOTAS:

1. PARA USARSE CON LA PLACA DE DATOS EN BLANCO 616231.
2. — — — — — INDICA LIMITES DIMENSIONALES.
3. EL DADO DEBE PRODUCIR UNA IMPRESION LEGIBLE.

CARACTERISTICAS DE GEOMETRIA Y SIMBOLOS ▽ PLANICIDAD — RECTITUD < ANGULARIDAD ⊥ PERPENDICULARIDAD (A ESCUADRA) // PARALELISMO ○ REDONDEZ (CIRCULARIDAD) ⌀ CILINDRICIDAD △ PERFIL DE CUALQUIER SUPERFICIE ∩ PERFIL DE CUALQUIER LINEA ↑ VARIACION ⊕ POSICION REAL ⊙ CONCENTRICIDAD = SIMETRIA	A MENOS QUE SE ESPECIFIQUE DE OTRA MANERA, LAS TOLERANCIAS DE LAS DIMS; SON LAS SIGUIENTES: X XX XXX XXXX PULG ±.1 ±.02 ±.005 ±.0005 mm ±0.5 ±0.13 ±0.013 ANG. ±.50 GRADOS ELIMINAR REBABAS Y ORILLAS FILOSAS DEL BORDE. PULG .003-.015 mm 0.1-0.4 FILETEAR ESQUINA: PULG .020 mm 0.5 MAQUINAR SUPERFICIES PULG 125 mm 3.2 DIMS METRICAS MOSTRADAS [PARENTESIS]	DIBUJADO POR: Daniel Muñoz	04-13-2009	<b>ELECTRICAL PRODUCTS COMPANY</b> A DIVISION OF A. O. SMITH CORPORATION	
		APROBADO POR:			DESCRIPCION: CONNECTION DIAGRAM EXTERNAL
		TERCER ANGULO DE PROYECCION	FECHA EDS: 02-22-2009 REV. FORMATO: F	TAMAÑO: A	NUMERO DE DIBUJO: 627103-006
		CONFIDENCIAL: ESTE DIBUJO Y SU INFORMACION SON PROPIEDAD DE USO EXCLUSIVO Y CONFIDENCIAL DE A.O.SMITH CORP. Y NO DEBERAN SER REVELADOS, DUPLICADOS, DISTRIBUIDOS O USARSE DE OTRA MANERA SIN EL CONSENTIMIENTO ESCRITO DE A.O. SMITH CORP. -TODOS LOS DERECHOS RESERVADOS.ASME Y14.5M 1994	ESCALA:NONE	HOJA: 1	

版本	ECO	编制	日期	批准	日期
B	0001487	D.MUÑOZ	04-13-2009	M.ARGUELLES	04-13-2009



- 形位公差
- 平面度
- 直线度
- ∠ 倾斜度
- ⊥ 垂直度
- // 平行度
- 圆度
- ⊘ 圆柱度
- ⌒ 面轮廓度
- ⌓ 线轮廓度
- ↗ 圆跳动
- ⊕ 位置度
- ◎ 同轴度
- ≡ 对称度

除另有注明  
尺寸公差如下:

	X	XX	XXX	XXXX
英寸	±.1	±.02	±.005	±.0005
毫米	±0.5	±0.13	±0.013	
角度	±.50 度			
清理毛刺和尖棱				
英寸	.003-.015	毫米	0.1-0.4	
内圆角				
英寸	.020	毫米	0.5	
表面粗糙度				
英制	125	米制	3.2	

米制尺寸显示在 [ ]

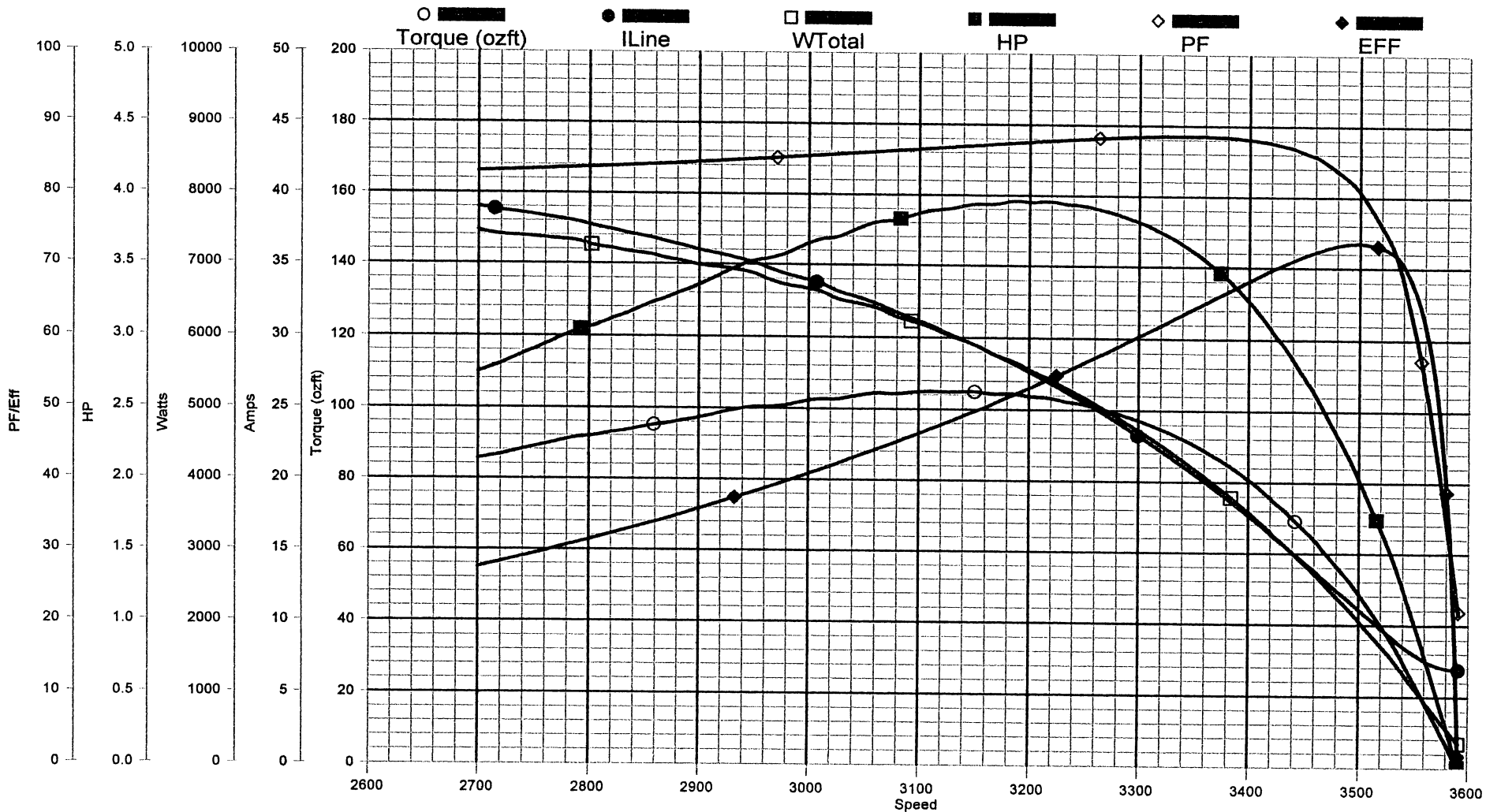
绘图:	Daniel Muñoz	04-13-2009
批准:		
第三角投影		图纸格式发布日期 02-22-2009 图纸格式版本 F
机密: 本图纸及相关信息所有权归A. O. SMITH公司所有。未经A. O. SMITH公司书面授权, 不得泄露、复制、传播或作其他用途。—版权所有		
ASME Y14.5M 1994		

		<b>ELECTRICAL PRODUCTS COMPANY</b> <small>A DIVISION OF A. O. SMITH CORPORATION</small>	
名称		CONNECTION DIAGRAM EXTERNAL	
图幅	A	图号	627103-006
比例	NONE	页号	1

# AO Smith

Performance Down    Project: 0440007 (High Speed)

Friday, January 09, 2004 05:48 AM



TRACKING #: 10020559  
 SBU: Pump  
 ENGINEER: DWAYNE FOX  
 TECHNICIAN: DAN  
 BENCH: 2  
 TORQUE CELL: 350 lb-in  
 NP RPM: 3450  
 # SPEEDS: 1  
 MOTOR #: 3  
 TYPE: CAP. ST.

CUSTOMER:  
 MODEL:  
 FRAME: 48Y  
 PHASES: 1  
 HP: 1.00  
 VOLTS: 230.0  
 HERTZ: 60  
 START CAP: 161.00  
 RUN CAP: 0.00  
 COMMENT3: WINDING SPEC. C48L2W27

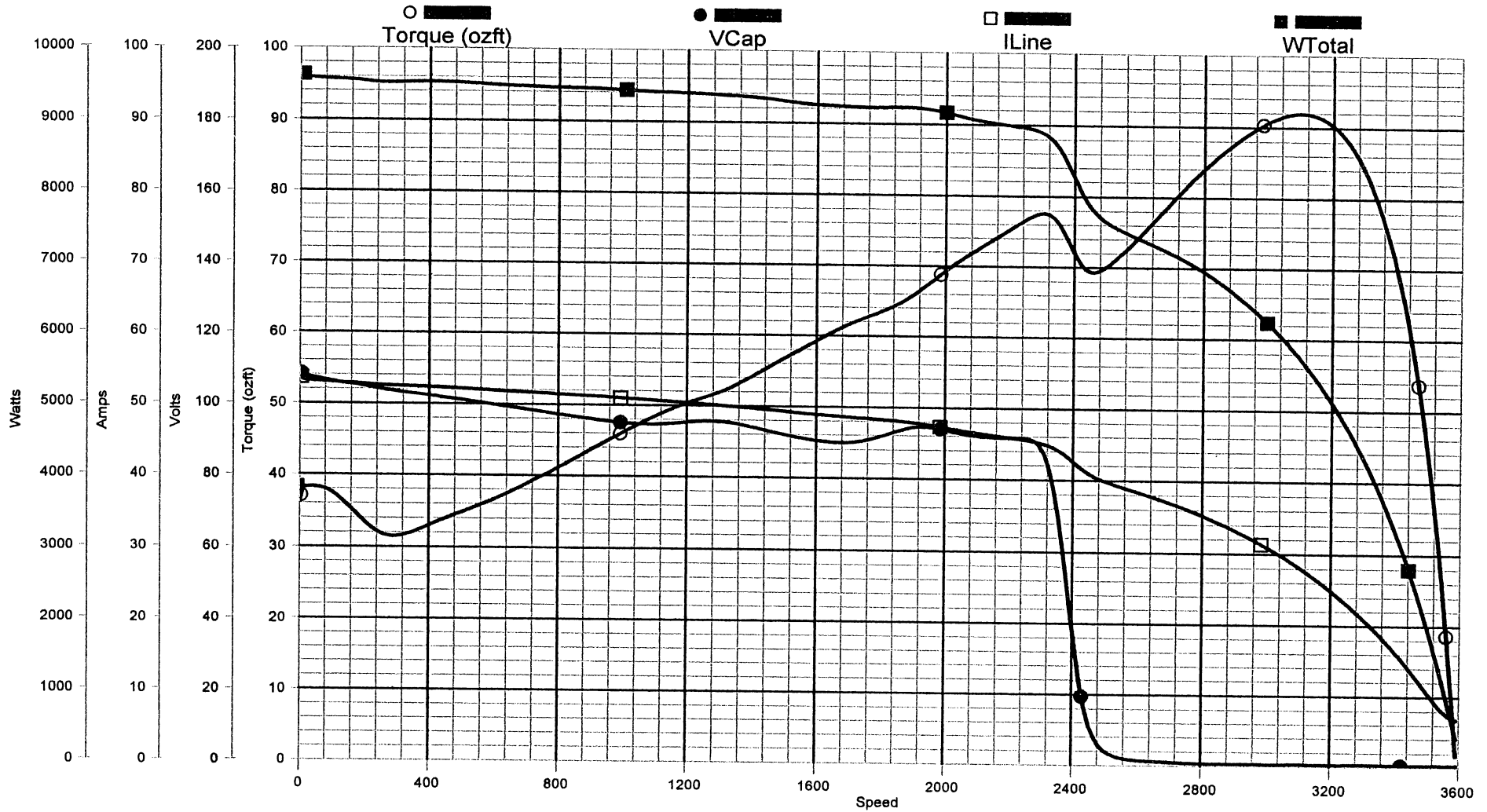
DESCRIPTION: OFFSET  
 BDT: 104.44  
 MT: 104.97  
 SF: 66.00  
 LRT: 0.00  
 LRA: 0.00  
 PUT: 0.00  
 COMMENT1: SQ1102 [ C48L2PA103A2]  
 COMMENT2:  
 COMMENT4:

LOCK AMPS: 52.9A  
 LOCK TORQUE: 35.0 oz-ft  
 BREAKDOWN  
 TORQUE: 104.4  
 oz-ft

# AO Smith

Performance Up Project: 0440007 (High Speed)

Friday, January 09, 2004 05:51 AM



TRACKING #: 10020559  
 SBU: Pump  
 ENGINEER: DWAYNE FOX  
 TECHNICIAN: DAN  
 BENCH: 2  
 TORQUE CELL: 350 lb-in  
 NP RPM: 3450  
 # SPEEDS: 1  
 MOTOR #: 3  
 TYPE: CAP. ST.

CUSTOMER:  
 MODEL: 1  
 FRAME: 48Y  
 PHASES: 1  
 HP: 1.00  
 VOLTS: 230.0  
 HERTZ: 60  
 START CAP: 161.00  
 RUN CAP: 0.00  
 COMMENT3: WINDING SPEC. C48L2W27

DESCRIPTION: 0-SYNC  
 BDT: 1.92  
 MT: 91.95  
 SF: 66.00  
 LRT: 36.13  
 LRA: 53.63  
 PUT: 31.47  
 COMMENT1: SQ1102 [ C48L2PA103A2]  
 COMMENT2:  
 COMMENT4: